



CAPABILITY STATEMENT



besteelfixing.com.au


CONTENTS

About Us.....	3
Our Capabilities	4
Integrated Management Systems.....	5
Fleet, Equipment and IT Capability	6
Environmental and Safety	7
Leadership You Can Trust.....	8
What We Can Do for Your Project.....	9
Recent Projects that Prove the BE Steel Fixing Difference.....	10
What Sets Us Apart	11
Testimonials.....	14



BE Steel Fixing

CAPABILITY STATEMENT



About Us

BE Steel Fixing was founded in 2017 to meet a growing demand in the construction sector for reliable, specialised steel fixing services. With a strong focus on delivering projects on time, within budget, and to the highest standards of safety and compliance, BE Steel Fixing has grown steadily and has completed steel fixing services to major projects across the following states and territories, Queensland, New South Wales, the ACT, and Victoria.

Our work ethic is simple: deliver outstanding results through well-managed teams, a commitment to quality, and a proactive approach to every project. With our Head Office located in Brisbane, we support projects along the east coast of Australia.

Our Capabilities

- Steel fixing for major infrastructure, civil and commercial construction projects
- Expertise across highways, bridges, tunnels, water treatment, utilities, wind farms, and rail
- Pre-fabrication services (onsite or offsite) to improve efficiency and reduce cost
- Seamless integration with head contractor systems, programs, and compliance frameworks
- Development of tailored Project Management Plans and ITPs
- Workforce clearance and induction processes
- Full compliance with safety, environmental, and quality regulations



Integrated Management Systems

Our Integrated Management System (IMS) incorporates:

- ISO 9001 Quality Management
- ISO 45001 (AS4801) Occupational Health and Safety
- ISO 14001 Environmental Management
- ABCC Building Code 2016
- Elements of AS31000 Risk Management
- Compliance with National Prequalification and Federal Safety Commissioner schemes

We build project-specific management plans that align with client expectations and legislative requirements. Our digital site tools, including mobile access to the BE Site App, allow real-time tracking, documentation, and reporting.



Fleet, Equipment and IT Capability

BE Steel Fixing operates a modern fleet of purpose-specific vehicles, all fully maintained and adaptable to suit individual project requirements. Our fleet and equipment include:

- 4x4 Toyota Hilux Utes
- Toyota Hiace Buses
- Vehicle-Mounted Welder/Generators
- Various petrol and electric cutting saws
- Various smaller generators
- Various small to medium welders

All equipment is subject to scheduled maintenance with documentation and safety protocols in place.

We also maintain extensive IT capabilities, from server-based office systems to mobile site operations. Every site is equipped with iPads running the latest BE Site App software, ensuring real-time project compliance, documentation, and communication. All systems are operated by fully trained staff to guarantee a seamless delivery process.



Environment and Safety

BE Steel Fixing operates with an embedded safety culture. We apply daily pre-starts, SWMS reviews, and site-specific risk assessments as standard practice. Environmentally, we focus on material sourcing, waste reduction, recycling, and innovation to minimise our footprint and support sustainable construction.



Leadership You Can Trust

BE Steel Fixing is built on a foundation of experience, commitment, and practical know-how, thanks to the leadership of our frontline management. With decades of global expertise in major civil and infrastructure projects, Steve Boland and Mark Ennis bring valuable insight and steady guidance to every project we undertake.

Steve Boland

DIRECTOR

Steve has worked on large-scale infrastructure projects around the world, bringing a calm and solutions-focused approach to every challenge. As a founding director, he plays a key role in project oversight and client engagement.

Mark Ennis

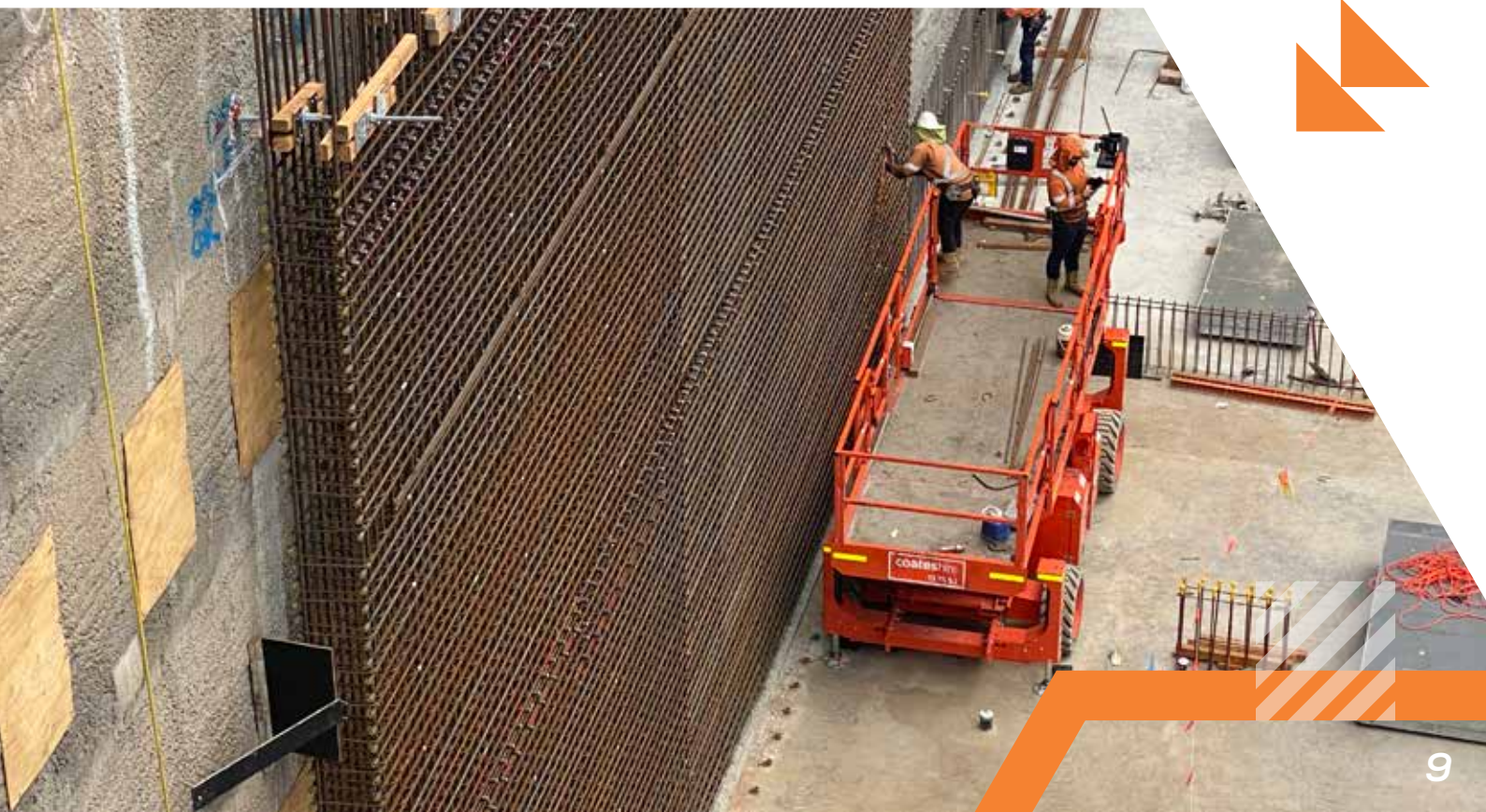
OPERATIONS MANAGER

Mark's extensive international experience in civil and commercial construction brings strength to BE Steel Fixing's strategic operations. He is known for his hands-on leadership and strong focus on delivering quality outcomes every time.



What We Can Do for Your Project

- Dedicated Site Supervisors and Leading Hands
- Integration of our Safety, Environmental, and Quality Management Systems with client systems, including customising the BE Site App
- Coordinated materials and equipment deliveries
- Early mobilisation of specialised equipment
- Submission of compliance documentation before project commencement
- Development of project-specific Inspection and Test Plans (ITPs)
- Inducted and cleared workforce
- Full insurance cover in place
- Inclusion in internal auditing schedules for contract, safety, environmental, quality, and IR compliance



Recent Projects that Prove the BE Steel Fixing Difference

- **The Coomera Connector** – Steel Fixing to Bridge structures that form part of the Large-scale infrastructure project delivery in a high-traffic corridor
- **Sydney Metro** – Precision steel fixing to the projects various station caverns and tunnel sections on one of Australia's most complex transport networks
- **Hunter Street Metro Station (Sydney Metro)** – Reinforcement works delivered for this future key interchange in the heart of Sydney's CBD
- **Wambo Wind Farm** – Completing 83 footings across two stages
- **Cross River Rail** – Steel Fixing to the various stations and underground station caverns, Deep tunnel and rail works requiring exacting compliance and coordination

Project Highlights

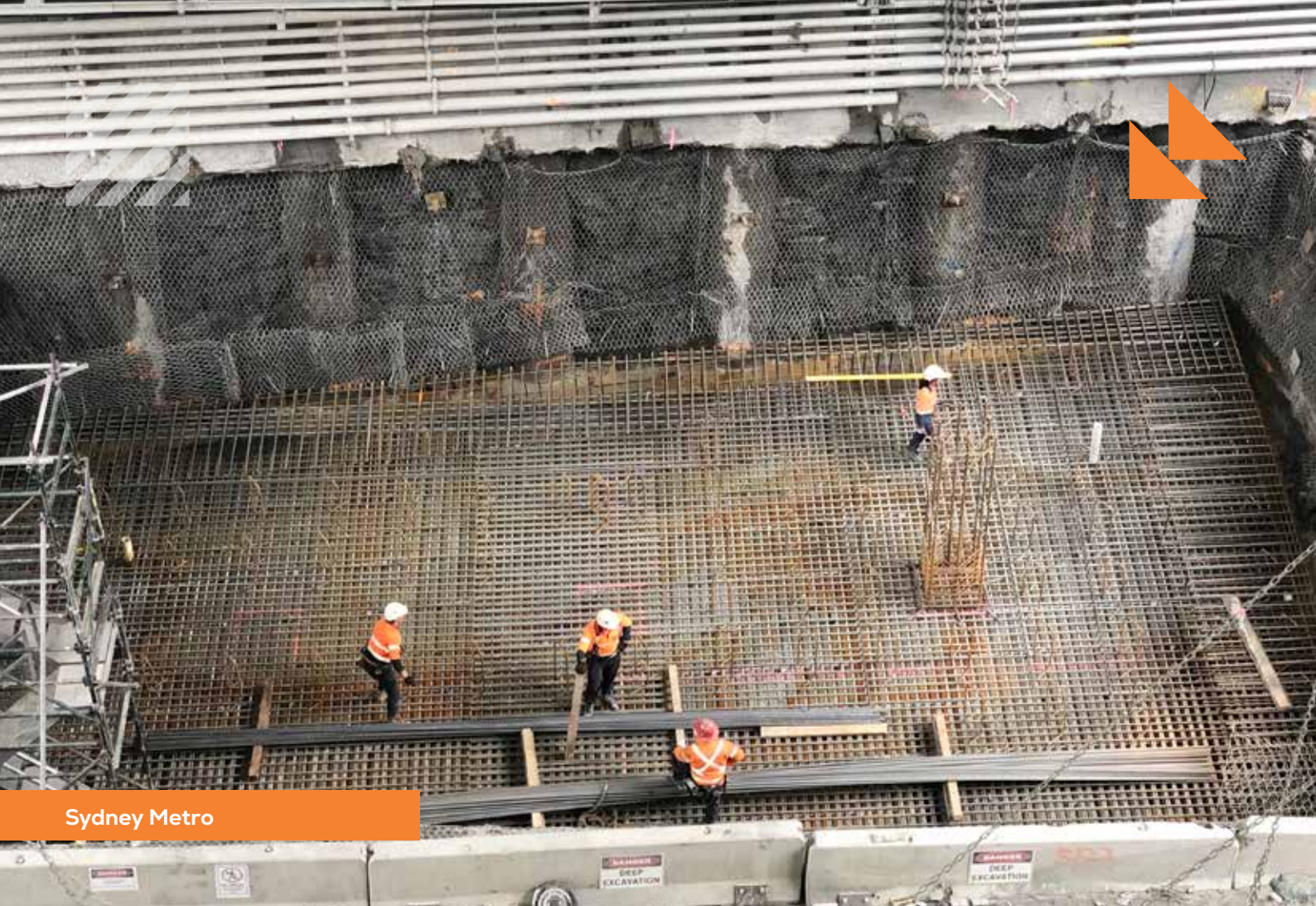
- **Coomera Connector North QLD** – 3,500 tonnes of reo installed
- **Cross River Rail QLD** – 15,000 tonnes of reo installed
- **Wambo Windfarm QLD** – 8,500 tonnes of reo installed
- **Pacific Complete NSW** – 7,500 tonnes of reo installed
- **TSRC Viaduct QLD** – 4,000 tonnes of reo installed
- **WestConnex M4-M5 Link NSW** – 2,000 tonnes of reo installed
- **Sydney Metro Victoria Cross Station Cavern NSW** – 4,500 tonnes of reo installed
- **St Peters Interchange M5 NSW** – 4,000 tonnes of reo installed

What Sets Us Apart

- Director-led engagement from planning through to delivery
- Tailored project teams backed by proven systems and support
- Real-time compliance tools and transparent documentation
- A reputation for reliability, responsiveness, and repeat business

RECENT PROJECTS

The Coomera Connector



Sydney Metro



Hunter Street Metro Station (Sydney Metro)



Wambo Wind Farm



Cross River Rail

Testimonials

Hi Mark and Steve,

On behalf of Nathan, I wanted to thank ourselves and your team for the completion of Wambo Windfarm Stage 1 & 2, Well done to all, the quality of work was always done and maintained to a high standard and your team made sure of that all the way, the client, us and Icubex were always happy with your guys with very little to no comments on Safety or QA. It was a tough job at times and thanks to your guys for always been there to assist us in any way they could.

Nathan Contractors , Operations Manager

Lads,

Upon completion of SCB, just want to say the lads on site have done a great job on this challenging structure. Credit to all the Team involved.

**Kennys Senior Project Engineer
Sydney Metro Project**

High commitment to working with AGJV to provide best for Project outcomes, receptive to safety inspections and recommendations for improvement. BE were excellent with SWMS development, they worked collaboratively to refine their methodologies for CCN with both AGJV Engineers, the Superintendent and Safety Representatives. Attendance at Toolboxes and Prestart meetings is high. Their level of house keeping was high, clean with consideration for safe access of AGJV site team and other subcontractors. Safety Record – no recordable incidents.

AGJV Coomera Connector North Project



BE Steel Fixing Pty Ltd

HEAD OFFICE

1100 New Cleveland Road, Gumdale QLD 4154

info@besteelfixing.com.au

www.besteelfixing.com.au

Director | Stephen Boland – 0450 647 268

Operations Manager | Mark Ennis – 0405 830 838